

How to configure a Mac OSX laptop to use the GTwpa wireless network:

1. Click the AirPort icon, located at the top right corner of the menu bar.



2. Make sure that AirPort is turned on. If it is not turned on, select "Turn AirPort On".
3. Click the AirPort icon again, and then select "Join Other Network".



4. Specify the network information as follows:
 - a) Network Name: Enter "GTwpa"; or, if these networks appear in the list, select one of them.
 - b) Security: Select WPA2 Enterprise (preferred) or WPA Enterprise.
 - c) User Name: Enter your GTAD username
 - d) Password: Enter your GTAD password.
 - e) 802.1X Configuration: Select Automatic.

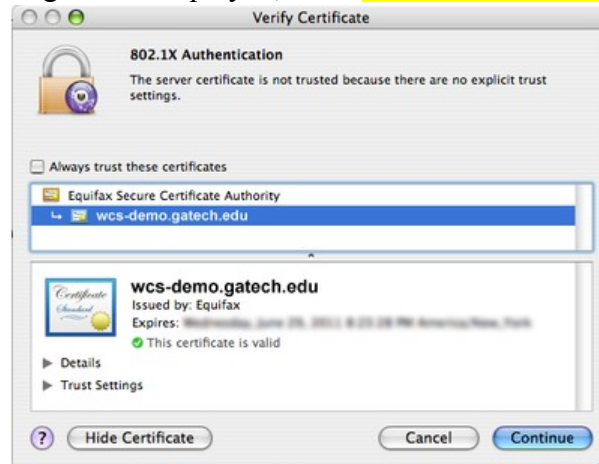
Next, click the "Join" button

5. Click "OK".

The Verify Certificate dialog box may be displayed.



6. If the Verify Certificate dialog box is displayed, click "Show Certificate".



7. Examine the certificate and make sure that it is legitimate.

The certificate should be issued by Equifax to the hostname: wcs-demo.gatech.edu, and the statement "This certificate is valid" should appear in the dialog box.

8. Click "Continue" to log into the Georgia Tech wireless network.

**If you are not automatically logged in within a minute, there could be a security block affecting your login. Open a web browser and authenticate in order to view any potential restrictions.

*****NOTE: Please refrain from logging on to machines that are not your own using the GTwpa wireless network option.**