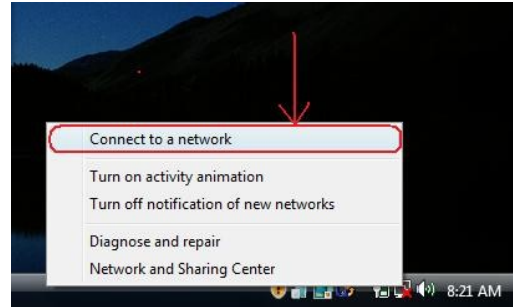
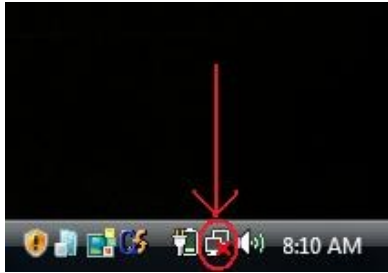
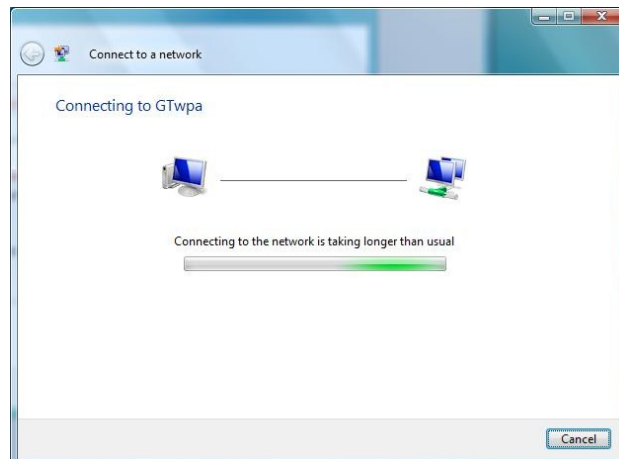
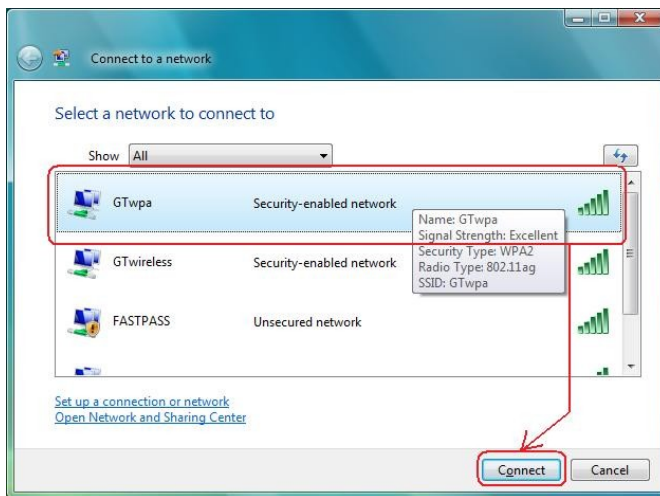


How to configure a Windows VISTA laptop to use the GTwpa wireless network:

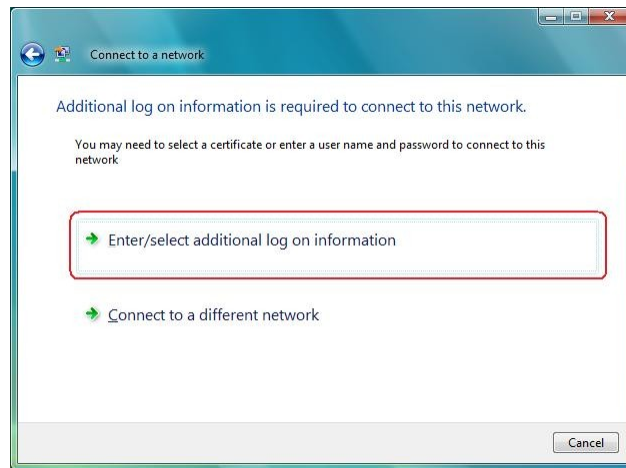
1) “Right Click” on the Wireless Network icon in the taskbar and select “Connect to Network”.



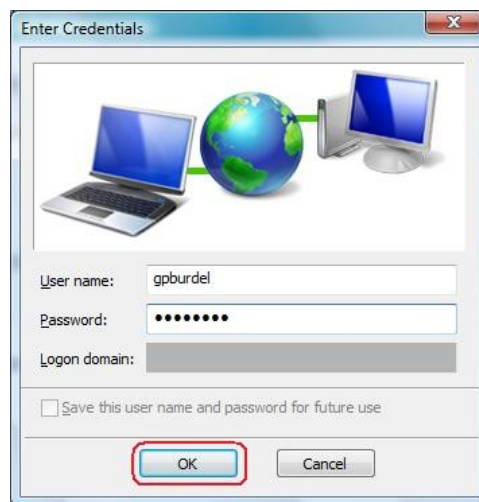
Bring up the “Connect to a network” window, select “GTwpa” and click “Connect”. You should then see the “Connecting to GTwpa” message.



3) Next, click on **“Enter/select additional log on information”** Link.



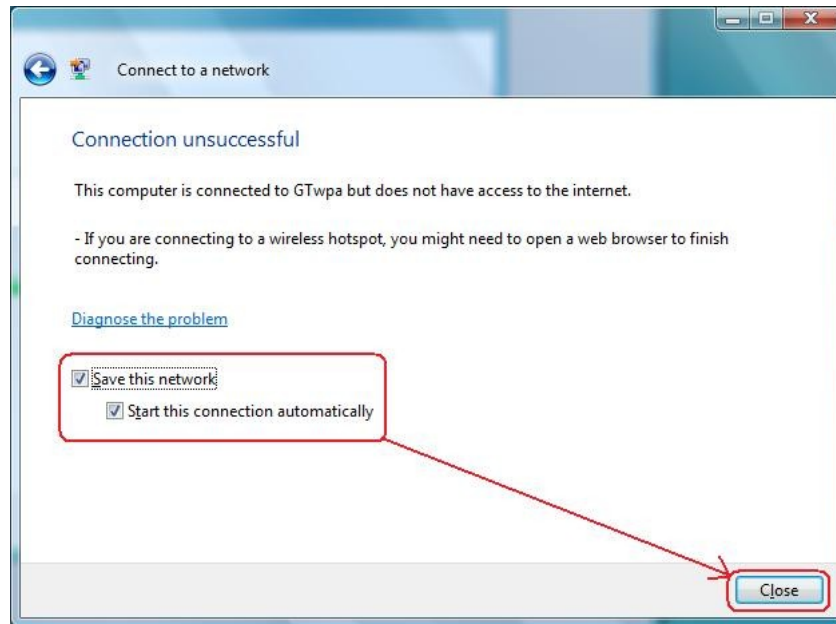
4) An **“Enter Credentials”** box should pop up. Enter your GT Active Directory username and password. Leave the Logon Domain field blank. Click OK.



5) Next, click on **“Enter/select additional log on information”** Link again, in the **“Connect to network”** pop-up. Click **“OK”** on the **“Validate Server Certificate”** window.



6) You will see the “Connecting to GTwpa” message again, and then another message giving instructions on how to complete the connection. It will say that the connection was unsuccessful, however you will need to open a web browser to finish connecting. Check both the “Save this Network” and “Start this connection automatically” check boxes, then click on the “Close” button. Next launch your favorite web browser. You should then see a successful connection to GTwpa (Exceclent Signal Strength) in the lower right of your screen on the taskbar.



*****NOTE: Please refrain from logging on to machines that are not your own using the GTwpa wireless network option.**