

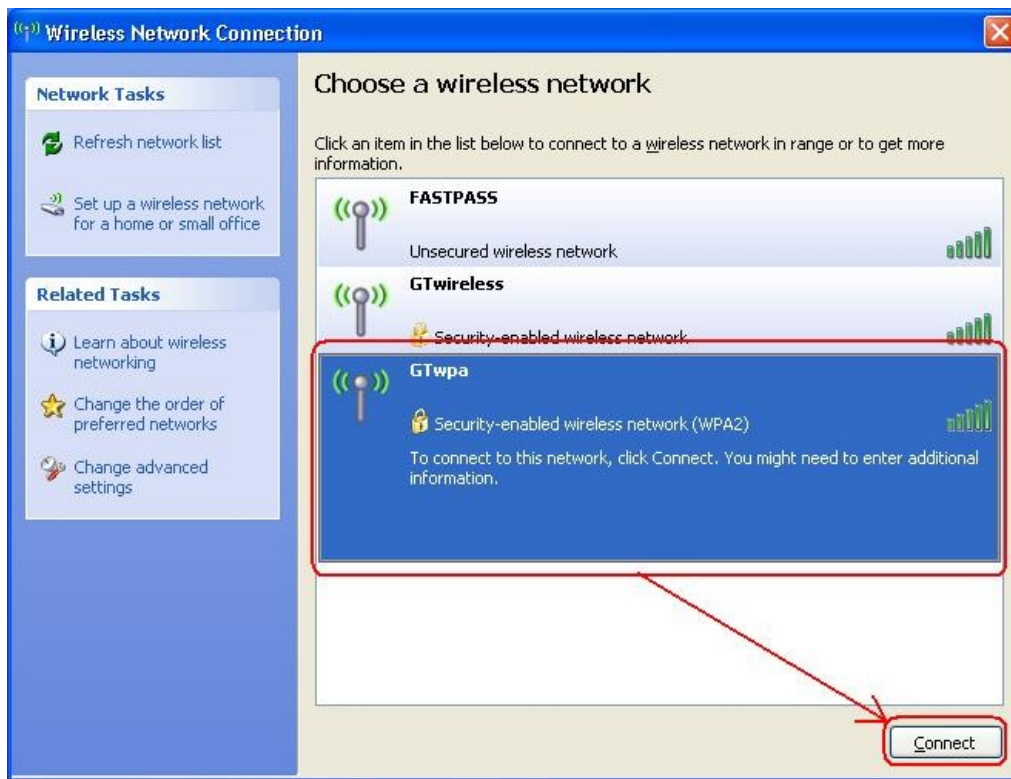
# How to configure a Windows XP/SP3 laptop to use the GTwpa wireless network:

1) “Right Click” on the Wireless Network icon in the taskbar and select “View Available Wireless Network”.

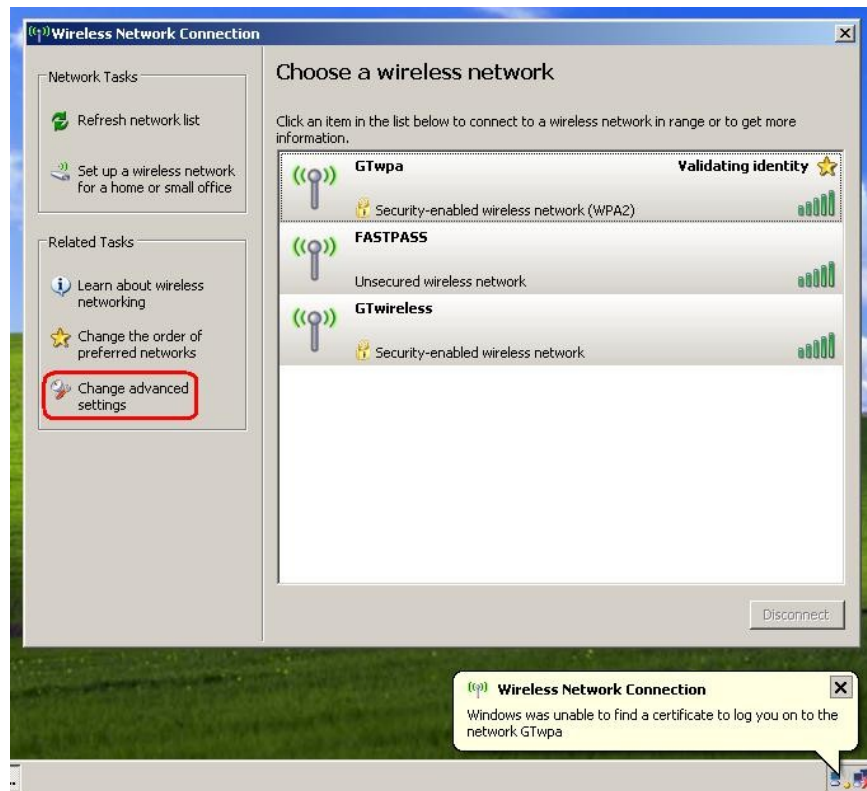


\*\*\* You can also get to the Wireless Connection Status window by clicking on “Network Connections” in the Control Panel and then clicking on the Wireless Network Connection icon.

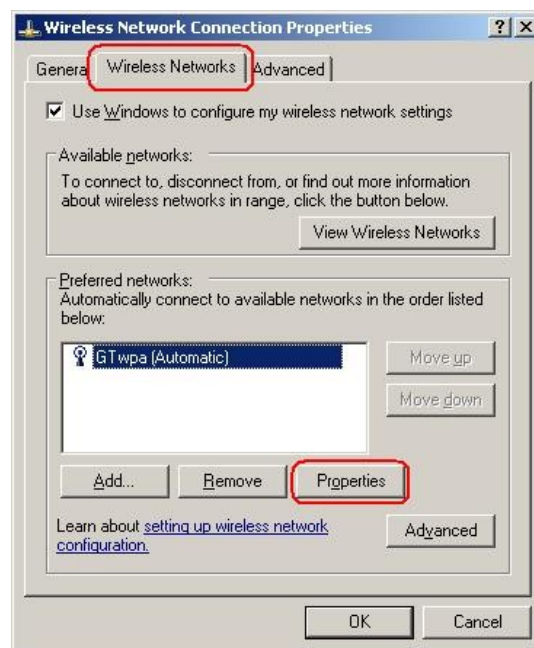
2) Bring up the “Choose a wireless network” window, select “GTwpa” and click “Connect”.



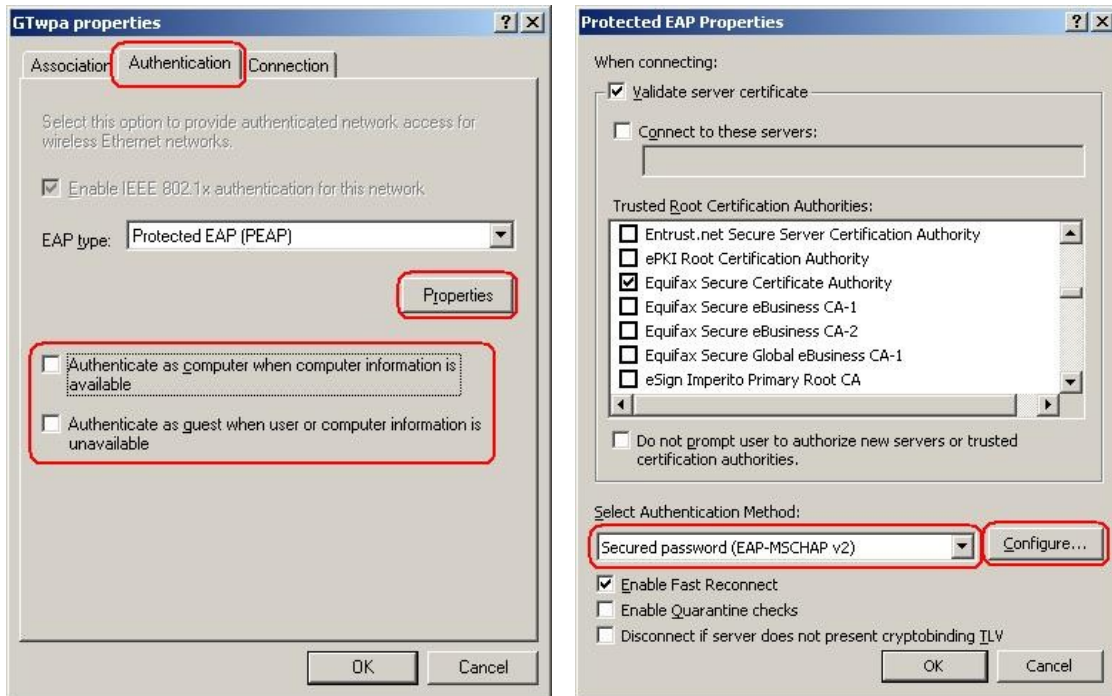
3)Next, you should see an error box in the bottom-right corner that says “... Windows was unable to find a certificate...”. Click on the “Change advance settings” Link.



4)The “Wireless Network Connection Properties” dialog box should appear. Click on the “Wireless Networks” tab and then on “Properties”.



5) Click on the “Authentication” tab, then select “Protected EAP (PEAP)” from the “EAP type” drop-down box and uncheck the boxes “Authenticate as computer when computer information is available” and “Authenticate as guest when user information is unavailable”. Click on “Properties” then scroll down the list of Trusted Root Certification Authorities and check the box named “Equifax Secure Certificate Authority”

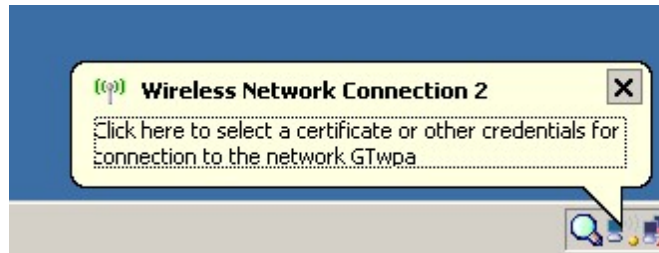


6) Make sure that the Authentication Method is set to “Secured password (EAP-MSCHAP v2)” and then click on “Configure”.

Uncheck the box that says “Automatically use my Windows logon name and password (and domain if any)” and Click “OK” on all “Four” of the open boxes.



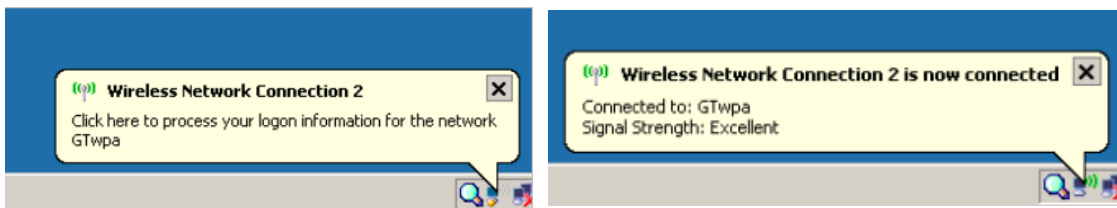
7) You should now see a pop-up box in the bottom-right corner of the screen that says “Click here to select a certificate or other credentials for connection to the network GTwpa”



8) Click on that balloon and an “Enter Credentials” box should pop up: Enter your GT Active Directory username and password. Leave the Logon Domain field blank. Click OK.



9) A balloon at bottom of the screen will pop up that says “Click here to process your logon information for the network Gtwpa”. Click on that balloon and you should then see the “Connected” message pop up in the bottom-right corner.



**\*\*\*NOTE: Please refrain from logging on to machines that are not your own using the GTwpa wireless network option.**